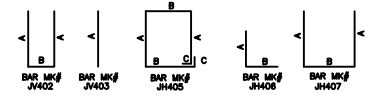
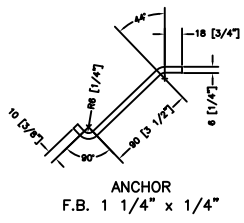
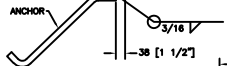
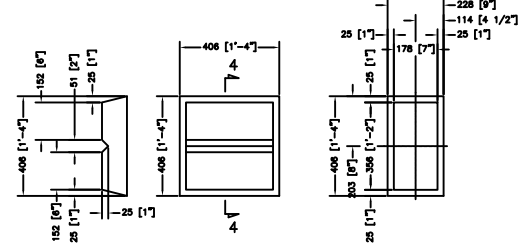
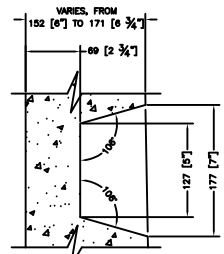
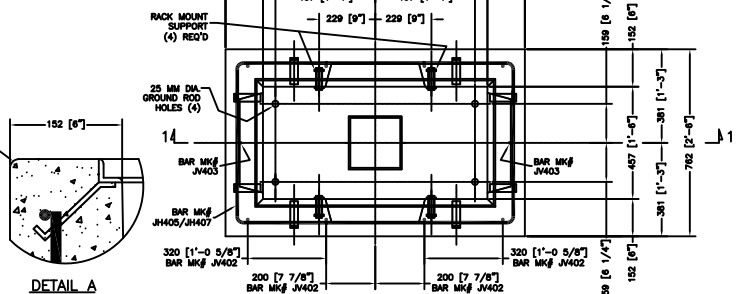


BAR MARK	SIZE #4 (ENGLISH) BARS			NO. BARS REQ.
	A	B	C	
JH402	1075 [3'-8 3/8"]	825 [2'-8 1/2"]		4
JH403	825 [1'-8 5/8"]			2
JH405	1125 [3'-8 1/4"]	850 [2'-1 1/2"]	100 [4"]	3
JH406	50 [2"]	425 [1'-3 3/4"]		2
JH407	375 [1'-2 3/4"]	850 [2'-1 1/2"]		2

SEE NOTE 7.



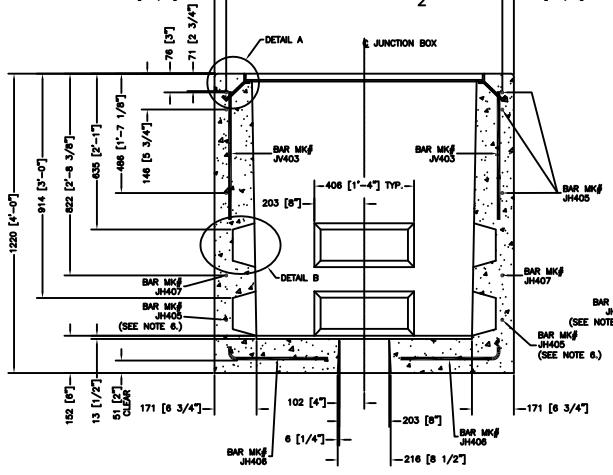
SECTION 3-3



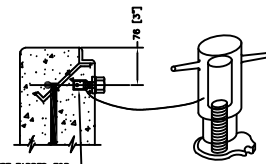
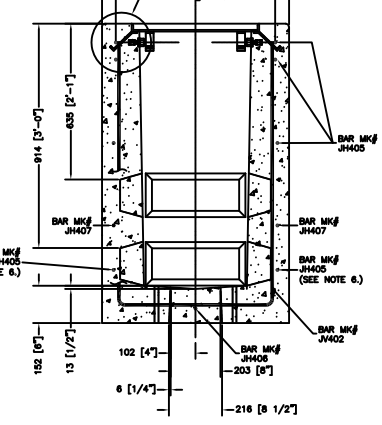
ALTERNATE RECESS ARRANGEMENT FOR END WALLS. DETAIL D

ALTERNATE RECESS (VERTICAL) ARRANGEMENT FOR SIDE WALLS. DETAIL E

PLAN

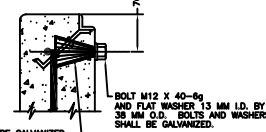


SECTION 2-2



THREADED INSERT TAPPED FOR M12 BOLT 5g THREAD. FURNISH WITH BOLT M12 X 40-6g AND FLAT WASHER 13 MM I.D. BY 38 MM O.D. BOLTS AND WASHERS SHALL BE GALVANIZED.

DETAIL F CABLE RACK SUPPORTS



INSERT SHALL BE GALVANIZED STEEL OR A GLASS FILLED THERMOPLASTIC MATERIAL.

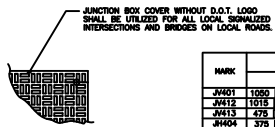
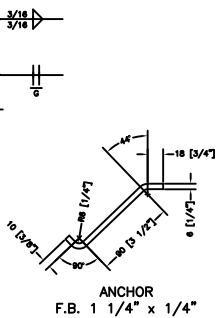
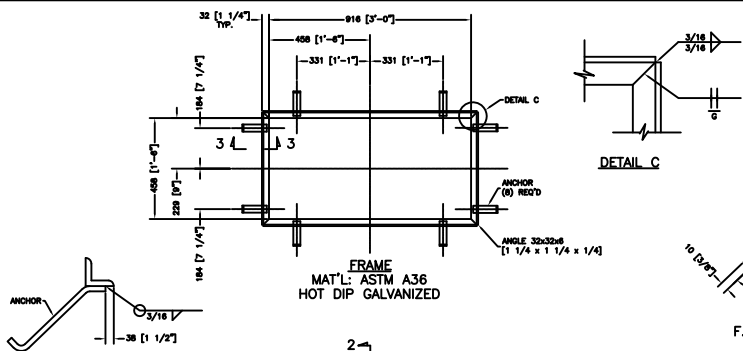
DETAIL F - ALTERNATE CABLE RACK SUPPORTS

NOTES:

1. MATERIALS AND CONSTRUCTION SHALL CONFORM TO NEW JERSEY DEPARTMENT OF TRANSPORTATION STANDARD SPECIFICATIONS UNLESS OTHERWISE AMENDED.
2. ALL ANGLES AND FLAT BAR TO BE ASTM A36M/A36M.
3. CONCRETE TO BE CLASS "B" USING APPROVED 16mm AGGREGATE, 0.83 C.M.
4. HOT DIP GALVANIZED FRAME. COVER PLATE IS CAST IRON STANDARD.
5. AN ALTERNATE RECESS ARRANGEMENT MAY BE SUBSTITUTED AS SHOWN IN DETAIL "D" AND "E".
6. INSTALL THIS BAR WHEN USING DETAIL "D" ONLY.
7. QUANTITY FOR JH505 IS (4) WHEN USING DETAIL "D" ONLY.

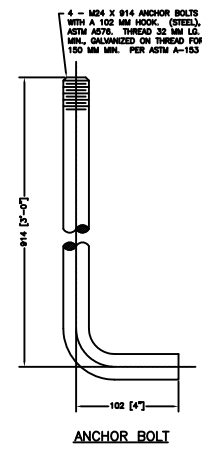
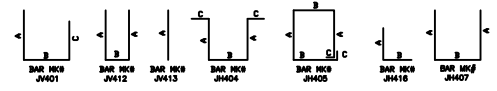
FADDIS CONCRETE PRODUCTS  
HIGHWAY LIGHTING JUNCTION BOX  
PRECAST - TYPE JB  
3515 KINGS HIGHWAY  
DOWNTOWN, PA. 19335  
PHONE: (610) 269-4685

TITLE:	DATE:	DR. BY:	SCALE:	DWG. NO.:
	9/20/01	GLE	---	D-3011-01
CLIENT: NEW JERSEY D.O.T.				

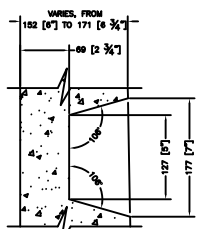
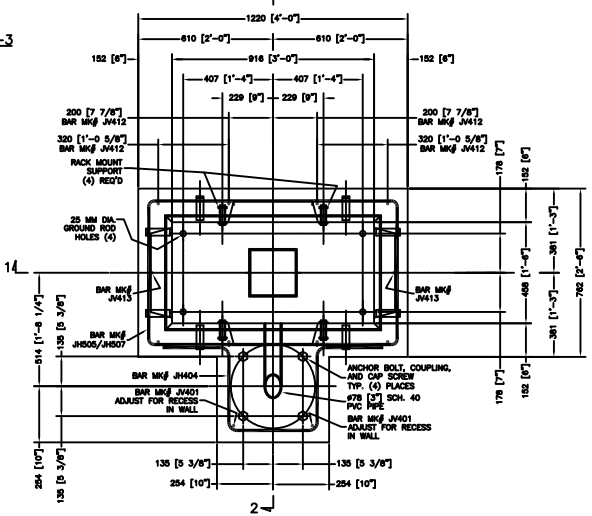


MARK	SIZE #4 (ENGLISH) BARS			NO. BARS REQ.
	A	B	C	
JH401	1000 [3'-0 1/4"]	1000 [3'-3 3/8"]	1000 [3'-3 3/8"]	2
JH412	1018 [3'-4"]	600 [1'-11 5/8"]	—	2
JH413	575 [1'-8 3/4"]	—	—	2
JH404	575 [1'-8 3/4"]	400 [1'-3 3/4"]	300 [1'-0"]	2
JH405	1125 [3'-8 1/4"]	550 [2'-1 1/2"]	100 [4"]	2
JH416	25 [1"]	170 [1'-2 3/4"]	—	2
JH407	375 [1'-3 3/4"]	650 [2'-1 1/2"]	—	2
JH408	1 000 MM	1 300 MM	100 MM	2
JH409	575 MM	400 MM	—	2

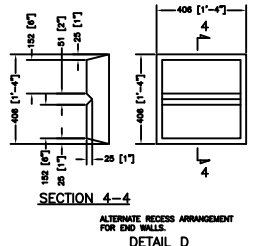
SEE NOTE 7.



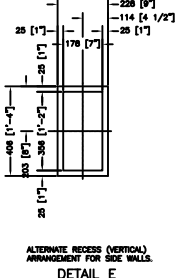
SECTION 3-3



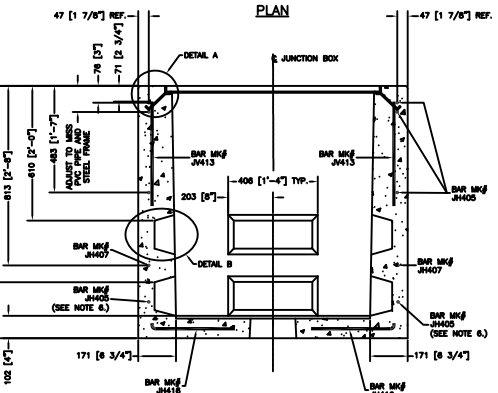
DETAIL B



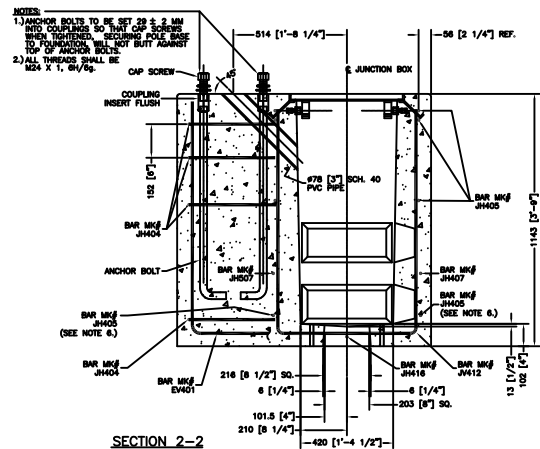
SECTION 4-4  
ALTERNATE RECESS ARRANGEMENT FOR END WALLS.  
DETAIL D



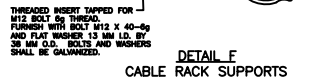
DETAIL E  
ALTERNATE RECESS (VERTICAL) ARRANGEMENT FOR SIDE WALLS.



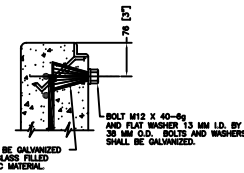
SECTION 1-1



SECTION 2-2



DETAIL F  
CABLE RACK SUPPORTS



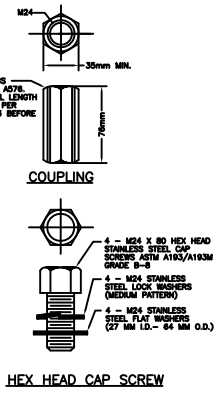
DETAIL G - ALTERNATE  
CABLE RACK SUPPORTS

THREADED INSERT TAPPED FOR #12 BOLT ON THRU. FURNISH WITH BOLT #12 X 40-6g AND FLAT WASHER 13 MM LD. BY 38 MM O.D. BOLTS AND WASHERS SHALL BE GALVANIZED.

INSERT SHALL BE GALVANIZED STEEL OR A CLASS Filled THERMOPLASTIC MATERIAL.

NOTES:

1. MATERIALS AND CONSTRUCTION SHALL CONFORM TO NEW JERSEY DEPARTMENT OF TRANSPORTATION STANDARD SPECIFICATIONS UNLESS OTHERWISE AMENDED.
2. ALL ANGLES AND FLAT BAR TO BE ASTM A36M/A36M.
3. CONCRETE TO BE CLASS "B" USING APPROVED 16mm AGGREGATE, 0.83 C.M.
4. HOT DIP GALVANIZED FRAME. COVER PLATE IS CAST IRON STANDARD.
5. AN ALTERNATE RECESS ARRANGEMENT MAY BE SUBSTITUTED AS SHOWN IN DETAIL "D" AND "E".
6. INSTALL THIS BAR WHEN USING DETAIL "D" ONLY.
7. QUANTITY FOR JH505 IS (4) WHEN USING DETAIL "D" ONLY.



FADDIS CONCRETE PRODUCTS  
HIGHWAY LIGHTING JUNCTION BOX  
PRECAST - TYPE JBF  
3515 KINGS HIGHWAY  
DOWNTOWN, PA. 19335  
PHONE: (610) 269-4685

TITLE:	DR. BY:	SCALE:	DWG. NO.:
10/8/01	GLE	---	D-3011-02
CLIENT: NEW JERSEY D.O.T.			